



# Calpain 2 (Phospho Ser50) rabbit pAb

|                           |   |
|---------------------------|---|
| <b>Catalog No</b>         | YP-Ab-02437   |
| <b>Isotype</b>            | IgG   |
| <b>Reactivity</b>         | Human;Mouse;Rat   |
| <b>Applications</b>       | WB; ELISA   |
| <b>Gene Name</b>          | CAPN2 CANPL2  |
| <b>Protein Name</b>       | Calpain 2 (Phospho Ser50)   |
| <b>Immunogen</b>          | Synthesized peptide derived from human Calpain 2 (Phospho Ser50)  |
| <b>Specificity</b>        | This antibody detects endogenous levels of Human,Mouse,Rat Calpain 2 (Phospho Ser50)  |
| <b>Formulation</b>        | Liquid in PBS containing 50% glycerol, 0.5% BSA and 0.02% sodium azide.   |
| <b>Source</b>             | Polyclonal, Rabbit,IgG  |
| <b>Purification</b>       | The antibody was affinity-purified from rabbit serum by affinity-chromatography using specific immunogen.   |
| <b>Dilution</b>           | WB 1:1000-2000 ELISA 1:5000-20000   |
| <b>Concentration</b>      | 1 mg/ml   |
| <b>Purity</b>             | ≥90%  |
| <b>Storage Stability</b>  | -20°C/1 year  |
| <b>Synonyms</b>           | Calpain-2 catalytic subunit (EC 3.4.22.53;Calcium-activated neutral proteinase 2;CANP 2;Calpain M-type;Calpain large polypeptide L2;Calpain-2 large subunit;Millimolar-calpain;M-calpain)   |
| <b>Observed Band</b>      | 69kD  |
| <b>Cell Pathway</b>       | Cytoplasm. Cell membrane. Translocates to the plasma membrane upon Ca(2+) binding.  |
| <b>Tissue Specificity</b> | Ubiquitous.   |
| <b>Function</b>           | catalytic activity:Broad endopeptidase specificity.,cofactor:Binds 3 calcium ions.,enzyme regulation:Activated by 200-1000 micromolar concentrations of calcium and inhibited by calpastatin.,function:Calcium-regulated non-lysosomal thiol-protease which catalyze limited proteolysis of substrates involved in cytoskeletal remodeling and signal transduction.,sequence caution:Contaminating sequence. Potential poly-A sequence.,similarity:Belongs to the peptidase C2 family.,similarity:Contains 1 calpain catalytic domain.,similarity:Contains 3 EF-hand domains.,subcellular location:Translocates to the plasma membrane upon Ca(2+) binding.,subunit:Forms a heterodimer with a small (regulatory) subunit (CAPNS1).,tissue specificity:Ubiquitous., |
| <b>Background</b>         | The calpains, calcium-activated neutral proteases, are nonlysosomal, intracellular cysteine proteases. The mammalian calpains include ubiquitous,   |



stomach-specific, and muscle-specific proteins. The ubiquitous enzymes consist of heterodimers with distinct large, catalytic subunits associated with a common small, regulatory subunit. This gene encodes the large subunit of the ubiquitous enzyme, calpain 2. Multiple heterogeneous transcriptional start sites in the 5' UTR have been reported. Two transcript variants encoding different isoforms have been found for this gene. [provided by RefSeq, Mar 2009],

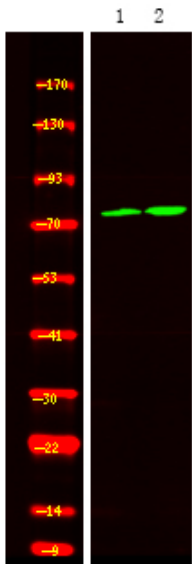
#### matters needing attention

Avoid repeated freezing and thawing!

#### Usage suggestions

This product can be used in immunological reaction related experiments. For more information, please consult technical personnel.

### Products Images



Western Blot analysis of 1 A549 cell 2 LPS 100ng/mL 30min treated ,using primary antibody at 1:1000 dilution. Secondary antibody(catalog#:RS23920) was diluted at 1:10000